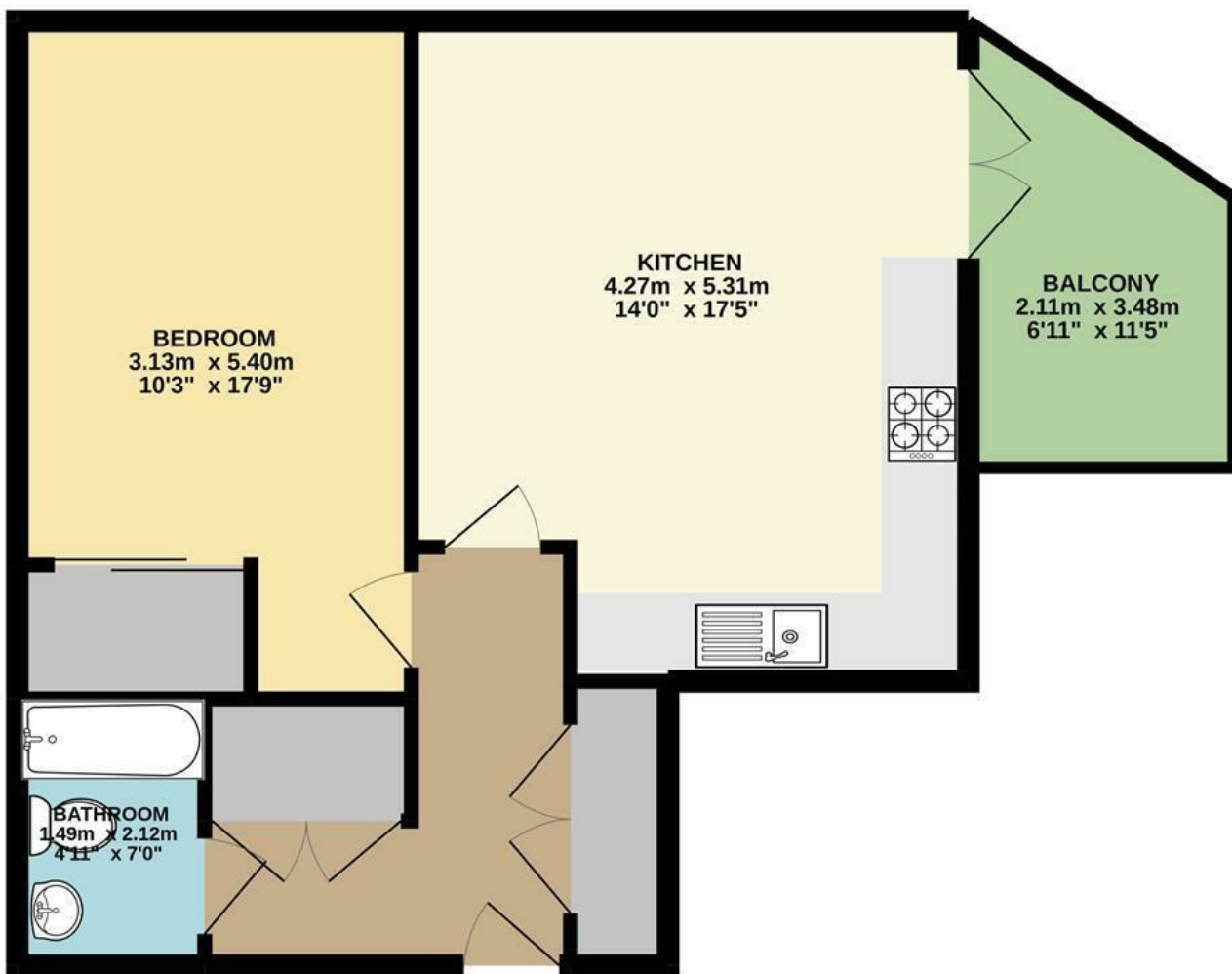




St. Stephens Road | Norwich | NR1  
 Guide Price £155,000

abbotFox

GROUND FLOOR  
 51.5 sq.m. (554 sq.ft.) approx.



Energy Efficiency Rating		
	Current	Potential
Very energy efficient - lower running costs		
(92 plus) <b>A</b>		
(81-91) <b>B</b>		
(69-80) <b>C</b>		
(55-68) <b>D</b>		
(39-54) <b>E</b>		
(21-38) <b>F</b>		
(1-20) <b>G</b>		
Not energy efficient - higher running costs		
<b>England &amp; Wales</b>	EU Directive 2002/91/EC	

Disclaimer – In accordance with the Property Misdescriptions Act, the company gives notice that all descriptions, references to condition, necessary permissions for use and other details are given in good faith and believed to be correct, but any intending lessees do not rely on them as statements of fact, but must satisfy themselves by inspection or other means, as to their accuracy.

TOTAL FLOOR AREA : 51.5 sq.m. (554 sq.ft.) approx.

Whilst every attempt has been made to ensure the accuracy of the floorplan contained here, measurements of doors, windows, rooms and any other items are approximate and no responsibility is taken for any error, omission or mis-statement. This plan is for illustrative purposes only and should be used as such by any prospective purchaser. The services, systems and appliances shown have not been tested and no guarantee as to their operability or efficiency can be given.  
 Made with Metropix ©2021



abbotFox presents this generous, one bedroom apartment. Situated within the ever popular development, of The Pavilion, this home offers a convenience hard to match with, Norwich City Centre on the doorstep. With allocated parking and a private balcony, this property benefits from spacious open plan living, generous double bedroom and family bathroom. Offered to the market with no onward chain, this property demands an internal inspection.

Guide Price - £155,000 - £165,000

